

- The Simple Solution for Denture Comfort

**AK-1 - ATLAS® Intro Accessory Kit**

- 1 - CePo Drill - Short (also used for 1.8 mm implants)
- 1 - Sizing Reamer = 2.2 implants
- 1 - Sizing Reamer = 2.4 implants
- 1 - R/A Hpc. Implant Driver
- 1 - Manual Implant Driver
- 1 - Set of 3 Denture Profile Forming Instruments
- 1 - Sterifix Cassette
- 1 - Instructions for use
- 1 - X-ray template
- 12 - Atlas Dome Keeper Marking caps



**AK-2 - ATLAS® Surgical and Prosthetic Instrumentation Kit**

- 3 - CePo Drills - (1.8 Short, 2.2, 2.4)
- 1 - R/A Hpc. Implant Driver
- 1 - Manual R/A Adaptor
- 1 - Set of 3 Denture Profile Forming Instruments
- 1 - Sterilizable Instrumentation Kit Box
- 1 - Instructions for use
- 1 - X-ray template
- 5 - Moisture Absorbing Papers

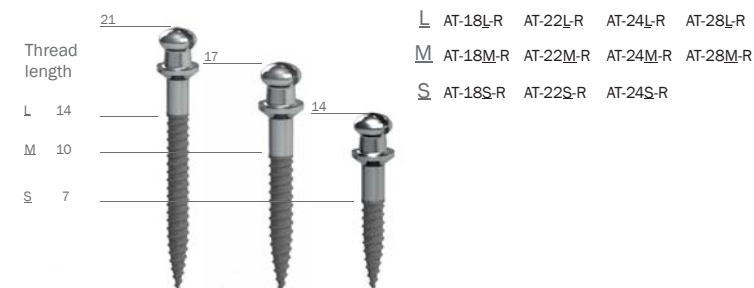


**ATLAS® Implant Packs  
(2 units/pack. Including 5 Marking Caps)**

		Diam (mm)	Tot. length (mm)	Thread length (mm)
AT-18S-R	Implant Pack	1.8	14	7
AT-18M-R	Implant Pack	1.8	17	10
AT-18L-R	Implant Pack	1.8	21	14
AT-22S-R	Implant Pack	2.2	14	7
AT-22M-R	Implant Pack	2.2	17	10
AT-22L-R	Implant Pack	2.2	21	14
AT-24S-R	Implant Pack	2.4	14	7
AT-24M-R	Implant Pack	2.4	17	10
AT-24L-R	Implant Pack	2.4	21	14
AT-28M-R	Implant Pack	2.8	17	10
AT-28L-R	Implant Pack	2.8	21	14



(mm) Atlas total implant length      ø 1.8 mm   ø 2.2 mm   ø 2.4 mm   ø 2.8mm



- MR-1041 2x 1.4 CePo Pilot Drills LONG (= 1.8 Impl. Diam.)
- MR-1042 2x 1.4 CePo Pilot Drills SHORT (= 1.8 Impl. Diam.)
- MR-1045 2x CePo Drills (= 2.2 Impl. Diam.)
- MR-1046 2x CePo Drills (= 2.4 Impl. Diam.)
- MR-1147 2x CePo Drills (= 2.8 Impl. Diam.) System 2
- AR-91 2x Sizing Reamer (= 1.8 Impl. Diam.)
- AR-92 2x Sizing Reamer (= 2.2 Impl. Diam.)
- AR-93 2x Sizing Reamer (= 2.4 Impl. Diam.)
- MR-120 1x Manual Adaptor for R/A Drivers
- AR-110 2x Atlas R/A Hpc. Implant Driver
- AR-8 2x Atlas Manual Implant Driver
- AR-151 20x Atlas Dome Keeper Marking Caps
- AR-15 4x Atlas Laboratory Analog
- AR-10 Denture Forming Instruments - Set
- MPD Dentatus Manual Power Driver - handle
- MPD-AT 2x Atlas Driving Bits for MPD Handle
- AK-900 1x Atlas Sterilizing Instrument Kit Box (no instruments included)

MR-900-25 25x Moisture Absorbing Tray Papers, for AK-900

**ATLAS® Tuf-Link®**

- TK-102 TUF-LINK® 10 ml Silicone Material incl. 3 Mix tips for TK-G-10
- TK-502 TUF-LINK® 50 ml Silicone Material incl. 10 Mix tips for TK-G
- TK-G Silicone Auto Dispenser Gun for 50 ml syringe
- TK-T 10 Auto Mixing Tips for 50 ml syringe (pink)
- TK-G-10 Silicone Auto Dispenser Gun for 10 ml syringe
- TK-T-10 10 Auto Mixing Tips for 10 ml syringe (brown)



BL-6529-EN



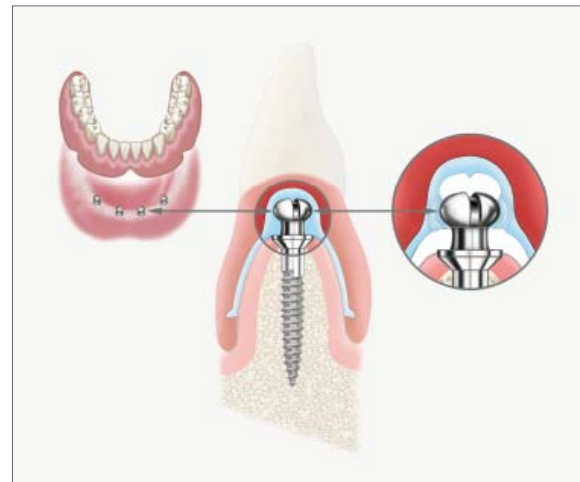
## THE SIMPLE SOLUTION FOR YOUR DENTAL PRACTICE

The narrow diameter ATLAS® implant is designed to retain lower dentures for patients with moderate to severely resorbed bone. ATLAS Implants are utilized with Tuf-Link® silicone reliner material. They provide cushioned support and stabilization with gentle, firm retention of the denture. The system distributes the chewing force on the ridge and implants without housings, O-rings or adhesives.

The ATLAS minimally invasive procedure without a surgical flap dramatically reduces chair time and the simple technical steps make it vastly more affordable to many patients. Because the implants can be immediately loaded and cushioned, patients can walk into your office and leave within an hour or less with a comfortable, stable denture.

For information on the retention of removable partials and upper dentures please contact Dentatus.

“I have used Atlas Denture Comfort and the fact that you can fit a denture to the Atlas implants more simply, with less hardware, with fewer steps—in addition to the procedure being non-invasive—is what attracts me to it.”  
— Nels Ewoldsen, DDS Dentist



## THE SIMPLE SOLUTION FOR YOUR PATIENTS NEEDS

If you're currently offering implant dentistry to your patients, ATLAS solves the all-too-familiar objections you and your team hear from patients: “Wow, I had no idea implants were so expensive!” or “I just can't take so much time off work.” The ATLAS protocol solves the problems of costly implant procedures for many patients who must forego the comforts of implant-retained restorations because of constraints due to time, bone or money.

If you're currently not offering implant dentistry to your patients, ATLAS is the place to start. The small number of components will simplify your assistant's need to have them ready for the procedure. Whether you are an experienced implantologist, prosthodontist or manage a restorative general practice, ATLAS will help you offer the highly productive treatment to many more patients within their financial means.

## AN IMPLANT SYSTEM THAT FITS!

- Fits thin ridges • Fits your patient's budget • Fits your practice

Tuf-Link resilient silicone liner provides secure retention and chewing comfort by being firmly retained in the periphery seam-line

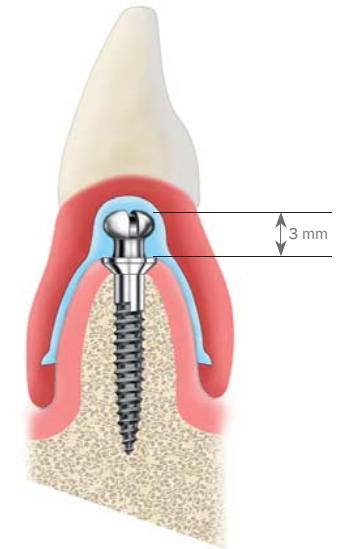
Low profile 3 mm ATLAS dome head creates balanced bilateral support with gentle passive retention without copings, O-rings or adhesives.

ATLAS titanium alloy implants are texturized and packaged sterile. Tapered, selfthreading design facilitates easy manual installation.

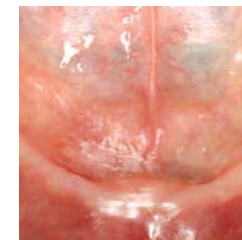
ATLAS one piece implants are available in 1.8, 2.2, 2.4 & 2.8 mm diameter and 7, 10, & 14 mm thread lengths.

FDA indicated for long-term use or any length of time as decided by the health care provider.

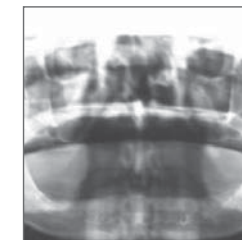
ATLAS protocol was developed in conjunction with the Department of Implant Dentistry, New York University College of Dentistry.



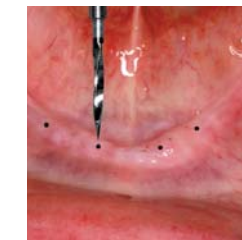
## SIMPLE TECHNIQUE



1. Severely Atrophied Alveolar Ridge



2. Radiographic Edentulous Ridge



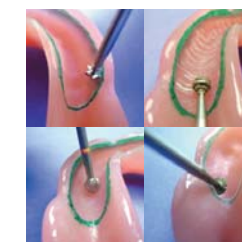
3. Flapless Osteotomy with Pilot Drill



4. Osteotomy-Refining Reamer



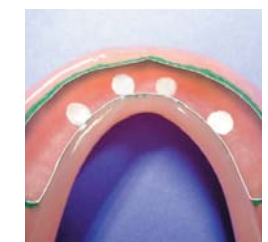
5. Placed Implants between the Mental Foramen



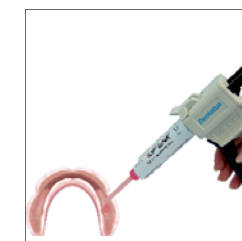
6. Denture Base Preparation



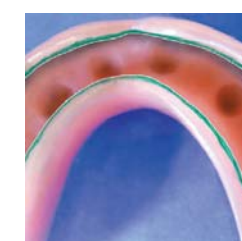
7. Hollow marked denture



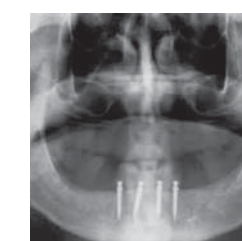
8. Hollowed denture marked for implants



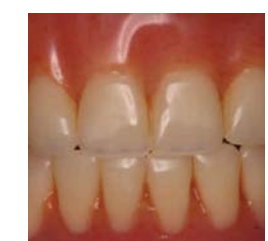
9. Expelled Tuf-Link



10. Denture with spaces for implants



11. Post-Op Panoramic View



12. One-Visit Retrofitted Denture