

# DENTATUS AB

MORE THAN 80 YEARS OF SWEDISH QUALITY  
IN THE GLOBAL DENTAL SERVICE



# At-a-Glance

## - Technique & Clinical Cases

Two overlapping wavy lines, one red and one blue, sweep across the middle of the slide.

**ATLAS<sup>®</sup>**

# Dentatus Implant systems

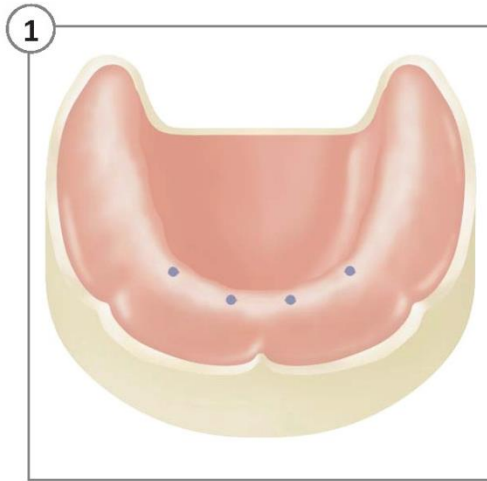
(mm)

Atlas total implant length

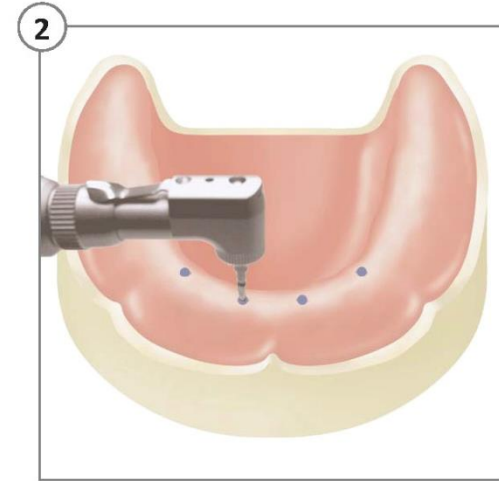


Diameters 1.8, 2.2, 2.4 and 2.8 mm

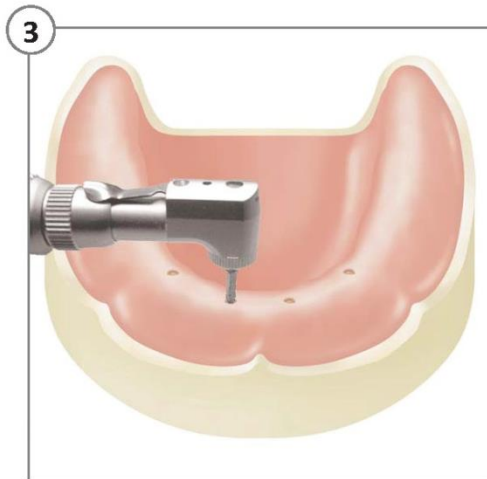
# Placing The Implants



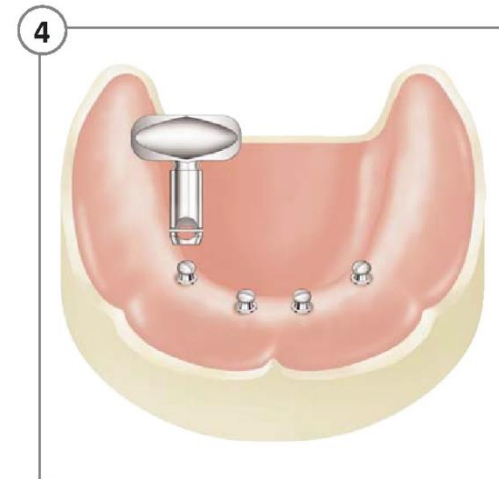
Mark Locations



Drill Osteotomies



Widen Osteotomies When Necessary



Install Implants

# Preparing The Denture



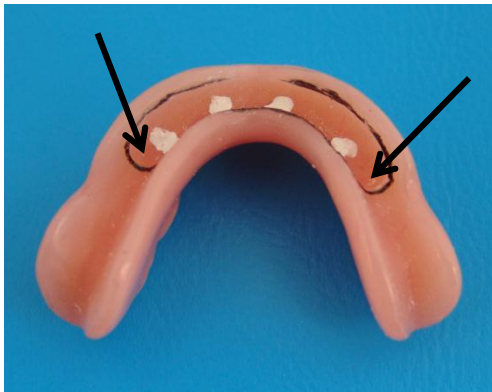
Create the seamline



Remove base material



Apply pip to marking caps



Transfer markings  
NOTE keep distance  
between seamline and last  
implant marking to approx  
10-12 mm



Relieve implant areas  
NOTE: Important to have  
at least 1-2 mm of soft  
reline between implant top  
and denture base



Clean denture

# Tuf-LinkII™ Reline



Remove marking caps  
from implants.  
Expel TufLinkII in  
denture and set in  
mouth 4-5 min



Trim excess material  
Check for voids in liner  
Check reline thickness  
on top of implants, min  
1-2 mm



Replace liner

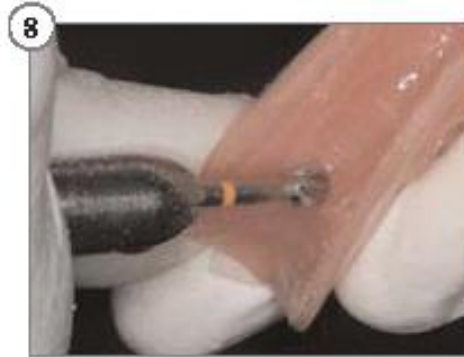
# Clinical Case - Bulbous Ridge



Photos courtesy of Dr. Paresh Shah



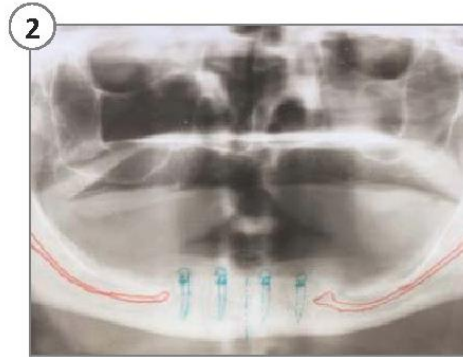
# Clinical Case - Bulbous Ridge



Photos courtesy of Dr. Paresh Shah

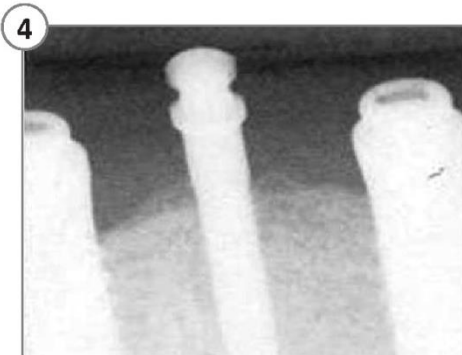
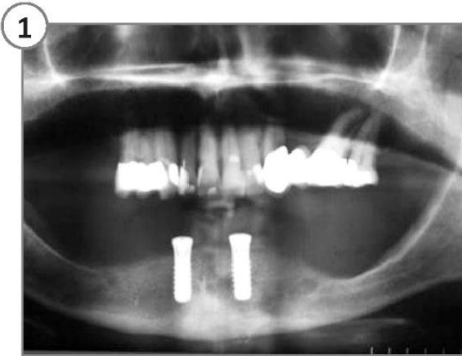


# Clinical Case - Narrow Ridge



Photos courtesy of Dr. Wolfram Bucking

# Clinical Case



Photos courtesy of Dr. Kelly Misch

# Atlas Kits & Components

See Dentatus  
Product Catalogue or  
[www.dentatus.com](http://www.dentatus.com)  
for latest updates

# HOW™ - Hands-On Workshop



***Stabilize, Cushion and Retain Lower Dentures without the use of housings, o-rings or adhesives.***

## THE CHALLENGE AND OPPORTUNITY

Considering there are 30-40 million edentulous Americans, we trust you will find value in the simplicity of the Atlas Denture Comfort protocol. Combined with high patient acceptance, this technique is a win-win situation for both you and your patients. This technique will be especially appealing to dentists who have used other systems that utilize cumbersome housing and O-ring retention.

This implant protocol is designed for both general dentists and their dental team. GP's will find placing Atlas narrow-body implants in 1.8, 2.2 & 2.4mm diameters, anterior to the mental foramen without a surgical flap or sutures, simple and predictable. The complete procedure of installing the Atlas implants and retrofitting the denture can be completed in about an hour. Dental assistant/hygienists will learn to pre-qualify patients for the treatment and learn how to prepare the denture base while the doctor is placing the implants. The dental team will also learn how to instruct patients in proper home care techniques.

## ATLAS DENTURE COMFORT

The length of treatment time is significantly reduced since the surgical portion forgoes the traditional 2-stage surgery. The narrow-body implants are placed without reflecting a flap and are immediately loaded. It's a great alternative to lengthy and costly bone augmentation procedures. Since the components are less costly, the procedure is more affordable to a greater number of patients.

We are confident that you will immediately recognize and see the potential to treat the edentulous population that we make this offer risk-free. If you are not satisfied with the Atlas Denture Comfort Hands-on Workshop we will give you up to 30 days to return the unopened Starter Kit for its full refund.

Workshop participants will drill osteotomies in the model, install 4 Atlas implants, prepare the denture base for retrofitting and relined the denture with the Tuf-Link® Silicone material. Participants will keep the model with the retrofitted, relined denture for staff training and patient education.

## COURSE OBJECTIVES

WORKSHOP PARTICIPANTS WILL BE ABLE TO:

1. List the indications for narrow-body implants;
2. Place and install Atlas implants;
3. Understand the osseointegration of narrow-body implants;
4. Recognize the indications and contraindications for the use of narrow-body implants;
5. Understand implant failure in overdenture cases;
6. Retrofit and reline a denture over Atlas implants;
7. Realize cost savings and increase profitability;
8. Learn how to market and present this affordable procedure to patients

We're excited about the Denture Comfort technique and the feedback we are receiving from Dentists and their patients. Since shortest lag time between learning experience and clinical application is crucial to success, the Start-up Kit includes: the course tuition, the patient education model you work on during the course and the patient starter kit which includes all the instrumentation and implants you will use on your first patient.

For information on tuition and to see a complete schedule of courses, please visit our website: [www.dentatususa.com/events](http://www.dentatususa.com/events) or give us a call at 800-323-3136.



# Published NYU Study

PRACTICAL PROCEDURES & AESTHETIC DENTISTRY

# PPAD

A Peer-Reviewed Journal

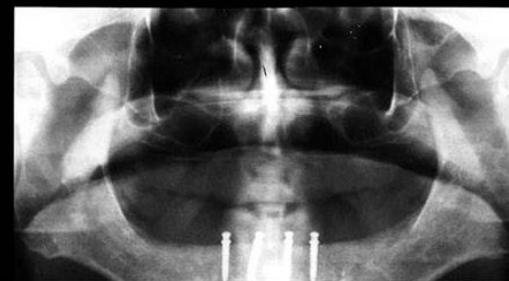
April 2007

VOLUME



## IMMEDIATE LOADING OF NARROW-DIAMETER IMPLANTS WITH OVERDENTURES IN SEVERELY ATROPHIC MANDIBLES

Sang-Choon Cho, DDS\* • Stuart Froum, DDS† • Chih-Han Tai, DDS‡ • Young Sung Cho, DDS§  
Nicolas Elian, DDS|| • Dennis P. Tarnow, DDS\*\*



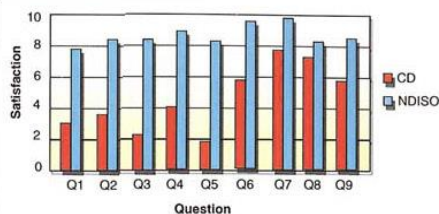
### Immediate Loading of Narrow-Diameter Implants With Overdentures in Severely Atrophic Mandibles

Sang-Choon Cho, DDS  
Stuart Froum, DDS  
Chih-Han Tai, DDS  
Young Sung Cho, DDS  
Nicolas Elian, DDS  
Dennis P. Tarnow, DDS

Table 3

Results of Patient Satisfaction Questionnaire\*

	Q1	Q2	Q3	Q4	Q5	Q6	Q7	Q8	Q9
CD	3	3.4	2.2	4	1.6	5.4	7.6	7.2	5.6
NDISO	7.8	8.1	8.6	9	8.2	9.3	9.4	8.4	8.4



\* 0 = Very Dissatisfied, 10 = Very Satisfied

Table 1

Implant and Prosthesis Survival of NDI-Supported Overdentures

Patient Number	NDIs Placed	NDIs Survived	Number of Failures	Length of Time With NDISO (Months)	Implant Survival Rate (%)	Prosthesis Survival Rate (%)
1	4	3	1	24	75	100
2	4	4	0	36	100	100
3	2	2	0	27	100	100
4	4	4	0	23	100	100
5	4	4	0	29	100	100
6	4	4	0	15	100	100
7	4	3 (4)	1*	15	75	100
8	2	2	0	30	100	100
9	4	4	0	15	100	100
10	4	4	0	14	100	100
Total	34	32	2	22.8	94.1	100

\* Replaced with another NDI two months following implant failure and removal (ie, two months post placement).