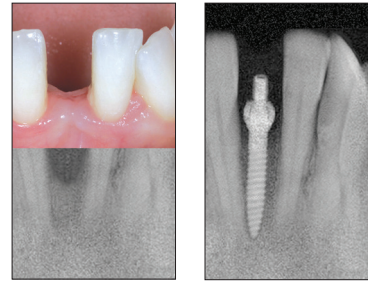




NARROW-BODY IMPLANTS WITH  
SCREW RETAINED PROSTHETICS



## **MINIMALLY INVASIVE NARROW BODY IMPLANTS FOR SCREW RETAINED **SINGLE TOOTH** PROSTHETICS**

Anew narrow body implants advance the field of implantology with unique solutions. They are ideal for patients who have limited interdental spaces, insufficient bone level requiring otherwise lengthy bone augmentation procedures, or financial constraint.

Anew's prosthetic components provide patients with a fixed restoration at the time of placement. The non-hygroscopic screwcap abutment allows for implants to be easily monitored, altered and adapted to a permanent restoration.

The Anew's user-friendly components provide unprecedented opportunities for single, multiple, and large restorations, as they can be placed in narrow ridges, limiting approximating roots and teeth, and in minimal occlusal spaces.

Anew is available in 1.8, 2.2 and 2.4 mm diameters.



## SCREW RETAINED NARROW-BODY IMPLANT & PROSTHETIC SYSTEM FOR IMMEDIATE AND LONG TERM USE

The patented Dentatus Anew Implants are used as a primary resource for a broad range of patients' restorative needs.

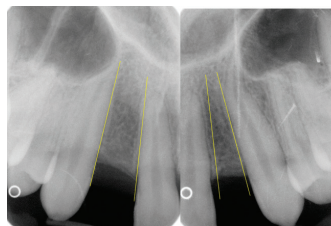
- Single, multi-unit, or full-arch immediate chairside made restorations
- Protecting graft sites in ridge bone augmentation
- Instant support for non-retentive or failing abutments and restorations
- Emergency repairs and bridge stabilization
- Stabilizing existing and new dentures with splinted screwcap security

### ANEW SINGLE TOOTH IMPLANTS FOR NARROW SPACES

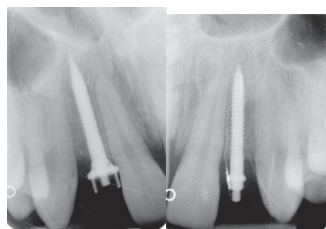
Clinical Procedures Courtesy: Dr. Ziv Mazor, Private Practice



Congenital Missing Laterals



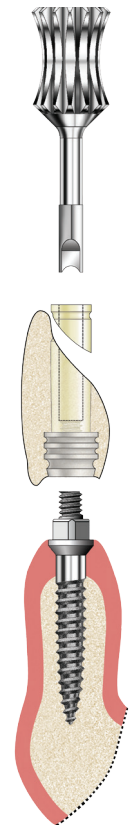
Very Narrow Interproximal Space



Anew Placed



Completed Screwcap Attached Restoration

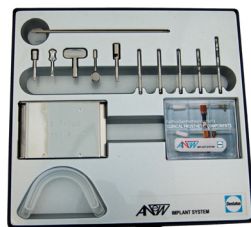


Anew resin screwcap assembled restorations, removable without force, prevent distortion and overcome metal screw fatigue and implant failures.

### GET STARTED WITH INTRO KITS AND REFILL PACKS

#### ANEW® Intro Accessory Kit (SK)

- 2 - 1.4 CePo Pilot Drills LONG, SHORT (= 1.8 Impl. Diam.)
- 2 - Universal Flexible Splint Frames - Short, Long
- 1 - ANEW Manual Wing Drivers
- 1 - ANEW Chisel End Screwcap Drivers
- 1 - ANEW Screwcap Space Refining Reamers
- 1 - ANEW R/A Hpc. Drivers
- 1 - ANEW Trepine Hollow Drills
- 2 - ANEW Ti Connective Bars
- 3 - Sizing Reamer (= 1.8, 2.2, 2.4 Impl. Diam.)
- 1 - Sterifix Cassette
- 1 - Instructions for use
- 1 - X-ray template



#### ANEW® Anew Surgical and Prosthetic Instrumentation Kit (SK-2)

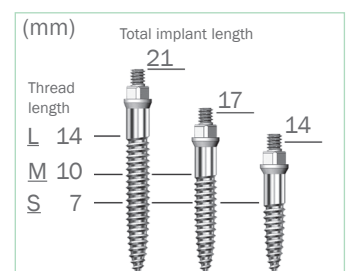
- 1 - ANEW Sterilizable Instrumentation Kit Box
- 2 - 1.4 CePo Pilot Drills LONG, SHORT - for 1.8 Implants)
- 2 - CePo Drills - for 2.2 and 2.4 Implants
- 1 - Manual Adaptor for R/A Driver
- 1 - ANEW Chisel End Screwcap Drivers
- 1 - ANEW R/A Hpc. Drivers
- 1 - ANEW Trepine Hollow Drills
- 1 - Instructions for Use
- 1 - X-ray Template



#### ANEW® Implant refills

Find the correct item number for ordering Implant refills. Combine the thread length (L, M, S) and the diameter (ø 1.8, 2.2, 2.4 mm) you need.

ø 1.8 mm	ø 2.2 mm	ø 2.4 mm
ST-18L-R	ST-22L-R	ST-24L-R
ST-18M-R	ST-22M-R	ST-24M-R
ST-18S-R	ST-22S-R	ST-24S-R



Anew Implant-restorative protocol developed in conjunction with the Department of Implant Dentistry, New York University College of Dentistry.



Dentatus AB  
Swe +46 8 546 509 00  
info@dentatus.se  
www.dentatus.com  
USA + 1 212 481 1010  
dentatus@dentatus.com

