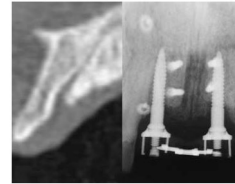
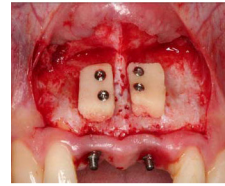




NARROW-BODY IMPLANTS WITH  
SCREW RETAINED PROSTHETICS



## **MINIMALLY INVASIVE NARROW BODY IMPLANTS FOR SCREW RETAINED **MULTI-UNIT RESTORATIONS****

Anew 1.8, 2.2, 2.4 mm diameter narrow body implants are designed for spaces where no others fit. Ideal for thin ridges, closely positioned roots, very slim teeth, and limited vertical spaces. Anew's user-friendly components provide unprecedented opportunities for single, multi-unit, and large restorations.

Anew implant short abutments accommodate divergent angles of restorations, passively attached with the safe resin screw caps.

The economical prosthetic components are designed for all sizes and lengths of Anew implants. There are components for chairside interim restorations and for laboratory procedures.

Anew screw-retained restorations, removable without stress, can be monitored, altered and adapted to newly reconstructed environments allowing a quick switchover of the patient's interim teeth to lab-customized restorations.

The Anew Narrow-Body Implant design system provides elegant solutions for finer dentistry.

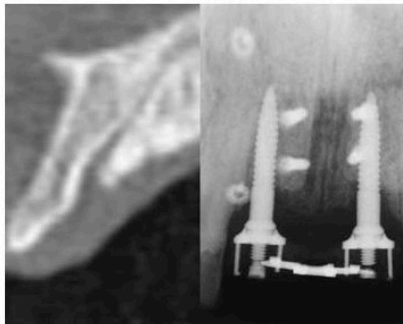
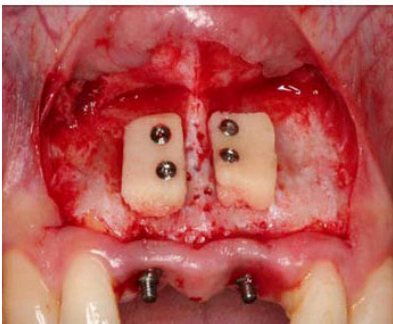
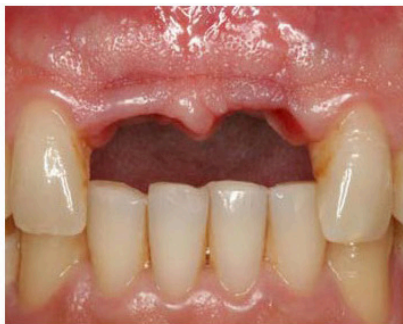


## ANEW IMPLANT SUPPORTED FIXED BRIDGE RETAINED WITH RESIN SCREWCAPS

The patented Dentatus Anew Implants are used as a primary resource for a broad range of patients' restorative needs.

- Single, multi-unit, or full-arch immediate chairside made restorations
- Protecting graft sites in ridge bone augmentation
- Instant support for non-retentive or failing abutments and restorations
- Emergency repairs and bridge stabilization
- Stabilizing existing and new dentures with splinted screwcap security

## 2-UNIT REPLACEMENT FOR PARTIAL DENTURE AND STABILIZING BONE GRAFT



Clinical Procedures Courtesy: Dr. Sang Choon Cho, NYU Implant Department

## COMPONENT KITS FOR ADVANCED USE:

### ST-22M-ST5 - ANEW® Eco-Pack, for two Chairside Restorations, including implants

- 2 - ANEW Implant Ø 2,2 - 17mm tot.length, 10 mm thread length
- 2 - ANEW Titanium Indexed Platform (for Individual Crowns)
- 2 - ANEW Resin Screwcap - Black
- 2 - ANEW Resin Screwcap - White
- 2 - ANEW Brass Cap Plug
- 1 - ANEW Short Screwcap Driver
- 1 - CePo Drill (= 2.2 Impl. Diam.)
- 1 - ANEW R/A Hpc. Implant Driver
- 1 - Manual Adaptor for R/A Driver
- 1 - Instructions for use



### ST-L - ANEW® Laboratory Kit, for one Crown

- 1 - ANEW Resin Indexed Platform
- 1 - ANEW Resin Screwcap - Black
- 1 - ANEW Resin Screwcap - White
- 1 - ANEW Brass Cap Plug
- 1 - ANEW Short Screwcap Driver
- 1 - ANEW Fixed Lab Analog
- 1 - ANEW Resin Impression Coping
- 1 - ANEW Removable Dowel Analog



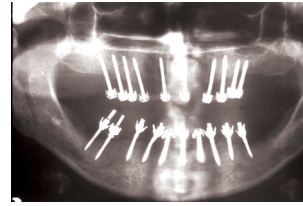
## FULL ARCH BRIDGE RESTORATION



Anew installed Implants



Occlusal View



X-Ray with Anew and MTI Implants



Lab. Bridge in place with Screwcaps

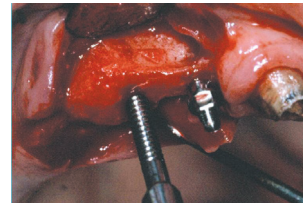
## STABILIZATION AND REPAIR OF FAILED BRIDGE



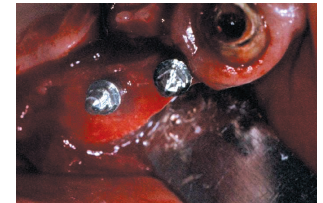
Initial state



Pre-op Palatal View



Anew Implant Installation



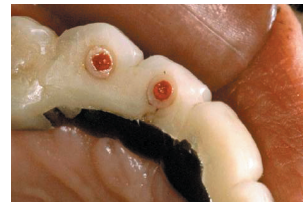
Bone Block Augmentation



Soft Tissue 2 Week Post-op



Tested Index Copings with  
Screwcaps Assembly



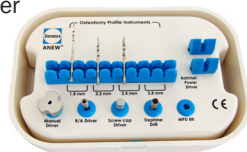
Anew Screwcap Entry plugged  
with temporary Resin



Finished restoration secured with screwcaps

### SK-2 - ANEW® Surgical and Prosthetic Instrumentation Kit

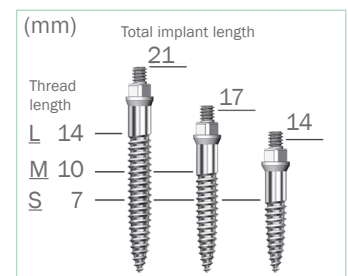
- 1 - ANEW Sterilizable Instrumentation Kit Box
- 2 - 1.4 CePo Pilot Drills LONG, SHORT for 1.8 mm Implants
- 2 - CePo Drills - for 2.2 and 2.4 mm Implants
- 1 - Manual Adaptor for R/A Driver
- 1 - ANEW Chisel End Screwcap Driver
- 1 - ANEW R/A Hpc. Driver
- 1 - ANEW Trepine Hollow Drill
- 1 - Instructions for Use
- 1 - X-ray Template



### ANEW® Implant refills

Find the correct item number for ordering Implant refills. Combine the thread length (L, M, S) and the diameter (ø 1.8, 2.2, 2.4 mm) you need.

	ø 1.8 mm	ø 2.2 mm	ø 2.4 mm
L	ST-18L-R	ST-22L-R	ST-24L-R
M	ST-18M-R	ST-22M-R	ST-24M-R
S	ST-18S-R	ST-22S-R	ST-24S-R



### ST-S - ANEW® Surgical Instruments Kit

- 1 - ANEW R/A Hpc. Implant Driver
- 1 - Manual Adaptor for R/A Driver
- 1 - ANEW Long Screwcap Driver
- 1 - CePo Drill 2.2
- 1 - CePo Drill 1.8L
- 1 - Instructions for use



### SNP-2 - ANEW® Clinical Prosthetic Kit, for two Interconnected Restorations

- 2 - ANEW Resin Screwcap - Black
- 2 - ANEW Resin Screwcap - White
- 2 - ANEW Brass Cap Plug
- 2 - ANEW Short Screwcap Driver
- 2 - ANEW Titanium Indexed Platform (for Large Spans) with connector sleeves
- 2 - ANEW Titanium Connective Bar





## **DESIGNED TO FIT WHERE NO OTHERS CAN**

The Dentatus Anew Implants, successors to the original MTI Transitional Implants presented in 1993, have been validated in over 20 clinical papers describing their utility and safety. The implants in standardized Ti alloy show superb bone adaptation comparable to levels of larger fixtures.

The integrated prosthetic implant system, with a non-hygroscopic screwcap attached restoration, is a major development in implantology. The screwcap assembled restorations, removable without force, prevent distortion and overcome metal screw fatigue and implant failures. The Anew solid implant construction is designed for first visit replacement of missing teeth.

Anew's user-friendly components provide unprecedented opportunities for single, multiunit, and large restorations, as they can be placed in narrow ridges, limiting, approximating roots and teeth, and in minimal occlusal spaces.

Dentatus AB, founded in 1930, continues to serve the world with distinctive cutting-edge products and implant prosthetic integrated components.



Anew Ti Alloy sterilized implants are approved for Long-Term Use. They must be treated according to prescribed safety standards and approved surgical protocols when placed directly through the tissue or combined with surgical incision flaps.

Implant-supported restorations may be left in place for time-frames decided by professional care providers.

Anew Implant restorative protocol is developed in conjunction with the Department of Implant Dentistry, New York University College of Dentistry.



Dentatus AB  
Swe +46 8 546 509 00  
info@dentatus.se  
www.dentatus.com  
USA + 1 212 481 1010  
dentatus@dentatus.com

