

# DENTATUS MINIMALLY INVASIVE IMPLANT SYSTEMS OVERVIEW

Find the correct item number for ordering implant refills.

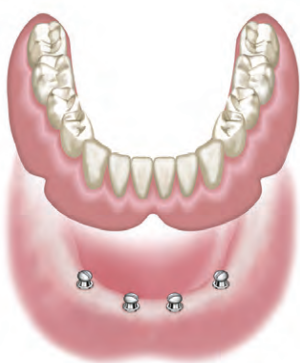
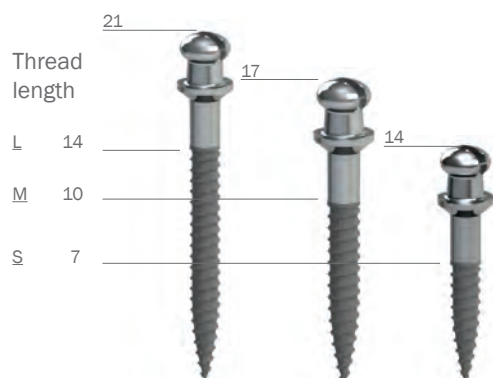
Combine the thread length (L, M, S) and the diameter (ø 1.8, 2.2, 2.4 and 2,8 mm) you need.



ø 1.8 mm   ø 2.2 mm   ø 2.4 mm   ø 2.8mm

<u>L</u>	AT-18 <u>L</u> -R	AT-22 <u>L</u> -R	AT-24 <u>L</u> -R	AT-28 <u>L</u> -R
<u>M</u>	AT-18 <u>M</u> -R	AT-22 <u>M</u> -R	AT-24 <u>M</u> -R	AT-28 <u>M</u> -R
<u>S</u>	AT-18 <u>S</u> -R	AT-22 <u>S</u> -R	AT-24 <u>S</u> -R	

(mm) Atlas total implant length



ø 1.8 mm   ø 2.2 mm   ø 2.4 mm

ST-18 <u>L</u> -R	ST-22 <u>L</u> -R	ST-24 <u>L</u> -R
ST-18 <u>M</u> -R	ST-22 <u>M</u> -R	ST-24 <u>M</u> -R
ST-18 <u>S</u> -R	ST-22 <u>S</u> -R	ST-24 <u>S</u> -R

Anew total implant length

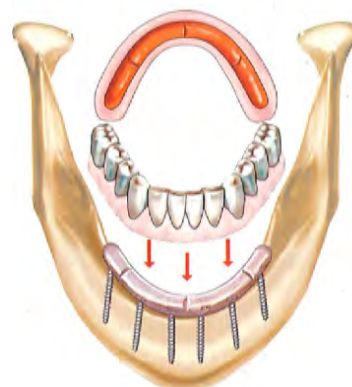
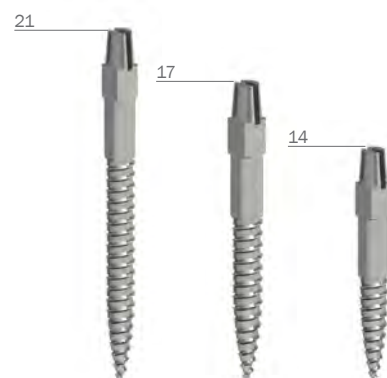


MODULAR TRANSITIONAL  
IMPLANT & PROSTHETIC SYSTEM

ø 1.8 mm

MR-2006
MR-2106
MR-2206

MTI total implant length





## MTI MONORAIL NARROW BODY IMPLANTS

### Indispensable for Expanding Your Implant Restorative Services

The one-visit, chairside treatment is an indispensable asset for bone graft and ridge augmentation procedures. Immediate transitional support of interim fixed restorations

- Easy to place
- Singular copings solve difficulties of interconnecting implants
- Less time to fabricate
- Cross arch stabilization

DENTATUS MTI-Monorail's streamlined design expands the implant-restorative protocol for wider use in the general practice.

MTI implants alone or with abutments used for small and large fixed bridges give patients teeth at the first visit and the visible benefits of implantology.

The Singular Copings, with the built-in metal Bar-Stop solves the difficulties of interconnecting varying implant heights and misalignments. Easier to place and less time to fabricate. The external Ti Bars radomly placed crete a strong metal-resin laminated spling supported by MTI-Monorail Transitional Implants.

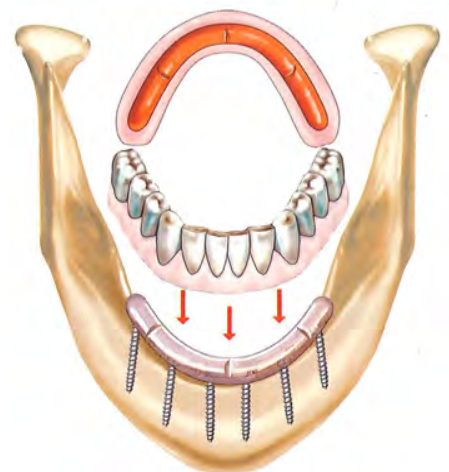
#### MTI-Monorail in Three Steps

1. Place Singular Copings
2. Insert Titanium Bars
3. Attach with Resin to the Restoration

Relieved to fit the low profile cemented splint and resurfaced with a soft reline.  
The denture is frictionally held in place and easily adjustable for stress-free removal.

#### The MTI-Monorail

- Interconnected splint follows the prosthodontic criteria of cross-arch support.
- The low-profile smoothly finished splint, is firmly cemented in place.
- A hollowed-out denture base, filled with silicon material, holds the denture firmly in place.
- Provides gentle, firm retention, that may be renewed as needed.



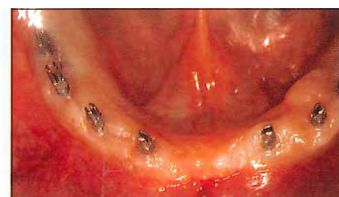
### IMMEDIATE FIXED BRIDGE SUPPORTED WITH 8 MTI IMPLANTS



MTI with Ti. bar and parallel modular copings at stage 1 surgery.



X-Ray with submerged fixtures and MTI implants.



Surgical sites and fixtures maturing without pressure in disturbance.



Laboratory constructed provisional bridge in place.

Clinical Procedures Courtesy: Nitzan Bichacho, D.M.D, Cobi J. Landsberg, D.M.D, Tel Aviv, Israel



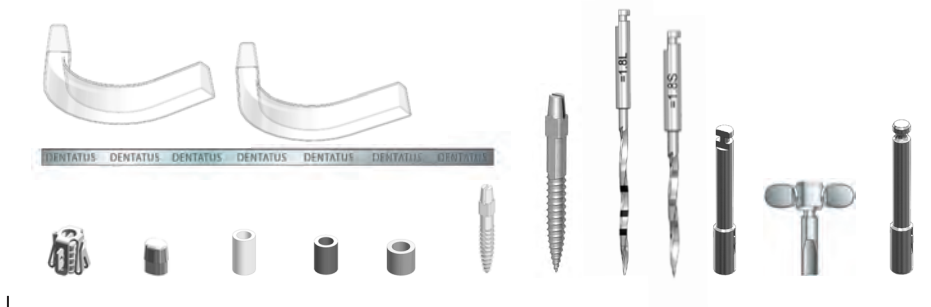
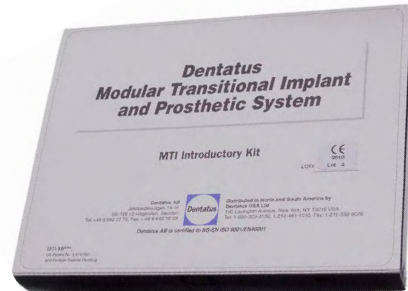
**Catalog no  
REF / Item**

**Product Description**

MK-2

## MTI Monorail Introductory kit

- 6 - Ti Implants 14 mm (Non Sterile)
- 6 - Ti Implants 17 mm (Non Sterile)
- 6 - Ti Implants 21 mm (Non Sterile)
- 18 - Monorail Singular Copings
- 6 - Comfort Caps
- 20 - Impression Copings
- 20 - Lab. Analogs
- 30 - Gingival Protective Spacers
- 4 - Ti Connective Bars
- 2 - Profile Drills (1 long, 1 short)
- 1 - R/A Hpc. Driver
- 1 - Winged Socket key
- 1 - Paralleling Extention Rod
- 4 - Universal Flexible Splint Frames - 2 Short, 2 Long
- 1 - Instructions for Use



MR-1041

2x 1.4 CePo Pilot Drill LONG (= 1.8 Impl. Diam.)

MR-1042

2x 1.4 CePo Pilot Drill SHORT (= 1.8 Impl. Diam.)

AR-91

2x Sizing Reamer (= 1.8 Impl. Diam.)



## MTI COMPONENT KITS, ACCESSORIES & COMPONENTS



Catalog no REF / Item	Product Description
--------------------------	---------------------

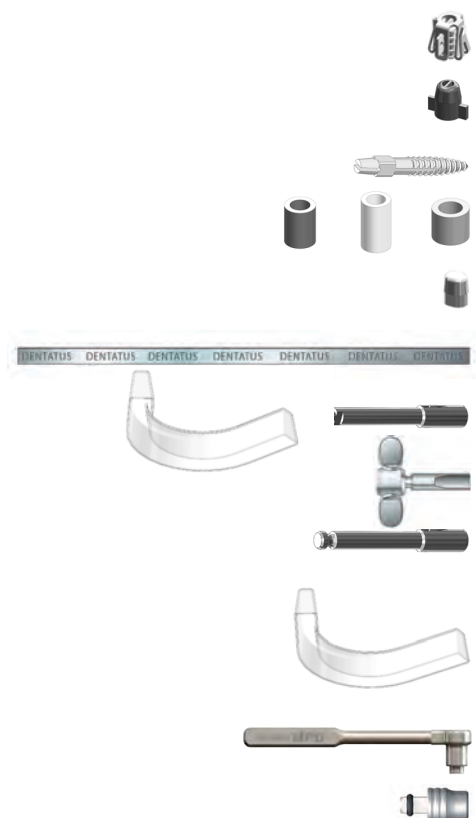
### MTI COMPONENT KITS

MR-2006	6x Ti Implant 14 mm (Non Sterile), 6x Sing. Cop., 12x Ging. Spacer, 2x Ti Connective Bar
MR-2106	6x Ti Implant 17 mm (Non Sterile), 6x Sing. Cop., 12x Ging. Spacer, 2x Ti Connective Bar
MR-2206	6x Ti Implant 21 mm (Non Sterile), 6x Sing. Cop., 12x Ging. Spacer, 2x Ti Connective Bar



### MTI ACCESSORIES & COMPONENTS

MR-2015	12x Monorail Singular Coping
MR-2035	20x Impression Coping
MR-2020	20x Lab. Analog
MR-2040	30x Gingival Protective Spacer
MR-1030	12x Comfort Cap
MR-2050	3x Ti Connective Bar
MR-1050	1x R/A Hpc. Driver
MR-1060	1x Winged Socket Key
MR-1075	2x Paralleling Extension Rod
MR-2070	4x Universal Flexible Splint Frame - Short
MR-2072	4x Universal Flexible Splint Frame - Long
MPD	1x Dentatus Manual Power Driver - Handle
MPD-MR	2x MTI Driving Bit for MPD Handle



# DENTATUS' GENERAL TERMS & CONDITIONS

## DENTATUS BUSINESS POLICY

It is our policy to make every effort to genuinely satisfy our customers by providing consistently high quality products and services. Our products are designed to perform as claimed when used in the manner recommended in our technical instructions and manuals and they are intended to be used by dental professionals only.

## PURCHASING

### Prices

Prices are subject to change without notice. Possession of a price list does not constitute an offer to sell. All prices are in European currency, Euro (€). For sales within the EU, Swedish VAT (25%) will be added unless a valid VAT registration number is presented at ordering.

### Ordering and Minimum Orders

When ordering products, please include complete catalog numbers. Orders totaling less than € 200 will be subject to a special processing charge of € 30.

### Terms

Payment will be made against documents unless otherwise agreed upon. Past due balances are subject to interest according to EU regulations. Dentatus also reserves the right to renegotiate the terms and conditions in the event of repeated late payments. Delivered products remain under the property of Dentatus until complete payment has been made by the customer.

## FREIGHT/SHIPPING

### General

All shipments are Ex Works (EXW). Assistance with arranging freight and insurance on request can be provided.

### Documents

Dentatus will cover costs for documents required to be authenticated and/or legalized by national authorizations to a certain extent. Extensive costs will be charged the customer separately.

### Claims

Short claims must be made within 10 days from receipt of goods. Damaged goods must be reported to the carrier within 24 hours. Damage claim must be filled by consignee.

## PRODUCTS

### Product Changes

Dentatus reserves the right to make product changes without prior notice. The customer is prohibited to remove or change Dentatus' trademarks and trade names, signs or any marks on any Dentatus product or packaging or to make any alternations in the construction or design of any product.

### Warranty

Dentatus warrants its products against defective manufacturing and materials under normal procedure of use within

the dental profession for a period of two years from date of purchase. Warranty claims must have proof of purchase to be valid.

### Returns and Claims

Before goods are returned for credit or exchange, prior written approval including a RMA (Return to Manufacturer Authorization) number must be obtained from Dentatus.

Only standard merchandise of current manufacture and labeling and less than one year from date of original shipment will be accepted for credit. Reason for return has to be stated. Merchandise returned in the original, unopened container and accompanied by the invoice number and date of purchase will be credited at the original purchase price. However, returned "opened" merchandise or merchandise requiring repackaging will be subject to a minimum of 15% restocking charge. Return of merchandise must be prepaid. Merchandise returned without prior written approval will be returned to the customer at the customer's expense.

### Instructions for Use (IFU)

In the EU, if officially requested language at any given time is not covered by IFU, delivery may not take place until an approved translation has been prepared. A written agreement on accepted deviation has to be made.

A translation has to follow the English or Swedish original, and has to be approved by Dentatus prior to use.

### Traceability

Dentatus' products are in general labeled with LOT numbers, which allow the products to be traced in production and to customers, in case of product malfunction. The LOT number is placed on the packaging and has to be included in any return, claim or incident/accident, where the product is likely to have failed. It is required that our distributors have an integrated functional system to trace our products to the purchaser/end-user/patient, whoever is the next in the distribution chain. We also require that our distributors make this requirement to their distributors (if relevant).

### Reporting Incidents and Accidents

Dentatus is conformed to the vigilance system as described in MEDDEV 2.12-1. Any malfunction of our products shall be reported to Dentatus without delay, but not later than 7 elapsed calendar days following the awareness of the event. It is important that we are informed in details on what has happened, which product(s) is (are) concerned, if there are any personal injuries or deaths involved, and a contact person for us to contact.

### Limitation of Liability

Except where prohibited by law, Dentatus will not be liable for any loss or damage arising from its products, whether direct, indirect, special, incidental or consequential, regardless of the theory asserted, including warranty, contract, negligence or strict liability.

*Dentatus AB, January 2017*