

# DENTATUS PROFIN® DIRECTIONAL SYSTEM

THE ULTIMATE INSTRUMENTATION FOR FINISHING AND POLISHING FOR PROFESSIONALS

## Your Companion to Dental Perfection

Perfect for:

- Hygienists
- Orthodontists
- Periodontists
- Prosthodontists
- Implantologists

The handpiece and the dedicated and wide assortment of abrasive Lamineer®/EVA Tips offer unlimited access to hard-to-reach intraoral areas, allowing reshaping of enamel and restorations made of porcelain, metal, composite and amalgam.

The Profin® system is the professional's choice for finishing, polishing and contouring dental surfaces, both natural or restored. The Profin system has been on the market since 1990.

The Profin® PDX hand piece with tactile ergonomics, smooth glare free surface and a miniature head for best access into incapacious areas is the latest upgrade of the Profin hand piece.

1.2 mm reciprocating tip movement

For perfect reshaping of enamel and restorations

Unlimited access to hard-to-reach areas



## Profin PDH - the Hand Instrument

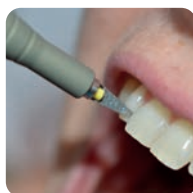
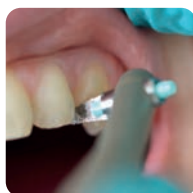
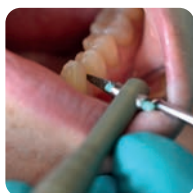
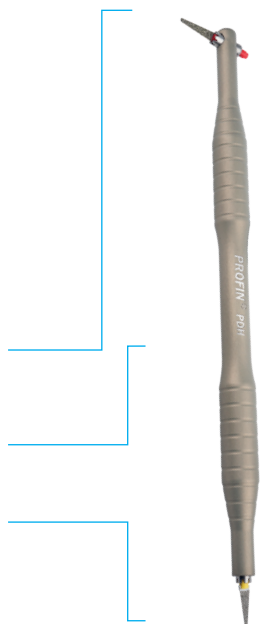
- Based on the established Profin/EVA system
- The same wide range of interchangeable diamond Lamineer tips
- For safe and precise finishing work

The PDH is a manual instrument based on the established Profin/EVA system, a high-quality hand instrument with the same wide range of interchangeable diamond tips for safe and precise finishing work.

Contra angled for posterior usage

Dual modalities: fixed or self-stering tip

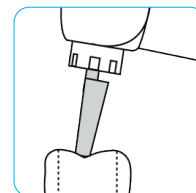
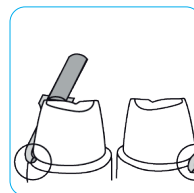
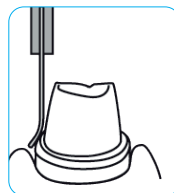
Straight for anterior usage



## Profin for CAD/CAM Restorations

- Optimize preparation for scanning
- Eliminate undercuts
- Fine tuning of borders

Use Profin PDX together with suitable Lamineer Tips for smooth cut surfaces in preparation, optimizing them for succesful scanning.



## - The Profin is an Excellent Aid for Refine Cavity Preparations

"The benefits of a smooth, crisp, cavity prep for Cerec restorations cannot be overstated. Excellent Cerec restorations are the result of excellent preparations. I have found the Profin to be an excellent aid to refine cavity preparations. It is also useful to finish hard-to-reach interproximal areas. The LTA-S100 and LTA-S75 tips are very useful for refining vertical proximal walls and margins. The LTA S75- and LTA-S50 are effective in contouring the interproximal margins and cement overhangs. And the LTA-S30 and LTA S-15 are used for final finishing of interproximal contours without damaging tooth or margins."



- DENNIS FASBINDER,  
DDS, MAGD, ABGD, ISCD Certified Instructor, MI

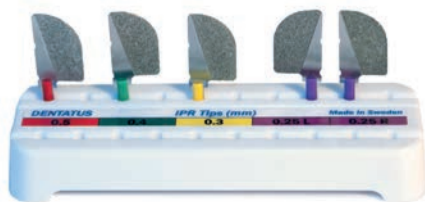
## Profin IPR - Lamineer® Tips for InterProximal Reduction

- The control in your hands
- Performance made easier
- Safe for adjacent teeth and gingiva

### Lamineer tips, now also for Orthodontists

Dentatus introduces its newest addition to the range of Dentatus Lamineer tips for Profin/EVA hand pieces, Profin IPR™ - tips for the highly acclaimed reciprocating Profin Directional System for interproximal reduction.

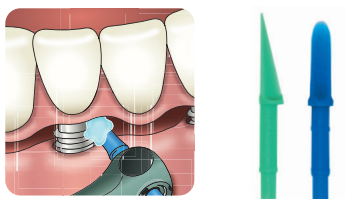
Profin is an essential addition to any discipline in dentistry and now in orthodontics too. For a dentist, patient safety is top priority, which is why Dentatus developed the Profin IPR. With Profin IPR, dentists can correct disproportionate tooth sizes, eliminate crowding, protect enamel and increase the durability of orthodontic treatment results. Profin IPR diminishes the risk of excessive stripping, thereby ensuring a more conservative removal of enamel in prescribed amounts.



## Dentatus EVA Tips for Implant Cleaning

- Single use plastic tips
- Use with dedicated cleaning paste of choice for implants
- No heat build-up, gentle to implants, prosthetics and gingiva

By using the plastic EVA tips for cleaning implants and implant retained prosthetics, an efficient and gentle cleaning can be provided.



## Lamineer® Tips for Profin/EVA

- Color coded abrasive diamond tips in different shapes, grits and sizes for specific applications
- Safe-sided to prevent damage to adjacent tissue or enamel
- Can be autoclaved to provide long term economical use

The Lamineer tips, with various diamond grit sizes, will remove gross excess materials for the finest finish.

The Wolfram/Tungsten plated tips give the smoothest pre-polishing finish of filling materials and will not scar adjacent enamel.

The disposable plastic polishing tips carry fresh polishing material to the right spot and prevent cross contamination.

Lamineer Tips can rotate freely to follow natural contours or be fixed for controlled detailing and shaping.

When used in place of finishing strips in a free floating mode, the tips provide delicate control to shape and polish both curved and flat surfaces to optimize esthetics in the gingival, interproximal, facial and incisal areas.

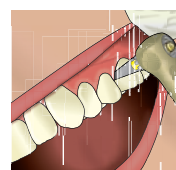


## Lamineer tips for efficient removal of gross overhangs

- Perfect for interdental hard-to-reach areas
- Minimizes the risk of iatrogenic damage to adjacent teeth caused by rotating instruments



Before



After

# Dentatus Per-lo-Tor for Scaling, Root-Planing and Debridement

- For Professional Mechanical Tooth Cleaning (PMTTC)
- Safe Root-Planing with Profin hand piece
- Developed by Prof. Per Axelsson

The Per-lo-Tor instruments are specially designed to optimize cleaning and planing of the rough root cementum and prevent further removal of root cementum once the surface is clean and smooth.

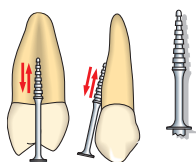
The secret is in the unique design of the Per-lo-Tor instruments, which have planing grooves set in a smooth surface.

## Stand for Per-lo-Tor Instruments



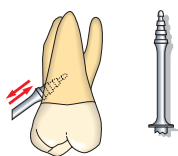
## PER-IO-TOR ↔

- for Profin reciprocating hand piece



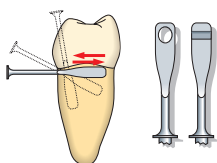
*PER-IO-TOR 1*

*is designed for root grooves and furcation areas.*



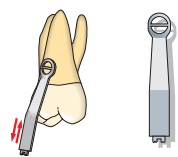
*PER-IO-TOR 2*

*is designed for root grooves and furcation areas.*



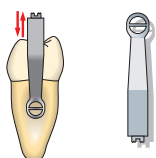
*PER-IO-TOR 3 and 4*

*should be used on plane and convex approximal surfaces. No 3 is extra thin for very narrow interproximal areas, such as lower anteriors.*



*PER-IO-TOR 5*

*has a concave working surface for vertical use on convex buccal and lingual surfaces.*



*PER-IO-TOR 6*

*has a convex working surface for vertical or diagonal use on concave approximal surfaces.*



Dentatus AB  
www.dentatus.com  
SE: +46 8 546 509 00  
info@dentatus.se  
US: +1 212 481 1010  
dentatus@dentatus.com

